



---

**To: Education and Children's Services Scrutiny Board (2)**  
**Date: 25<sup>th</sup> February 2016**

**Subject:** School Improvement and Education Progress

---

## **1 Purpose of the Note**

1.1 To update members on:

- Coventry's 2015 validated data – summary of changes to previously reported data in November (also see Appendix 1)
- Performance of vulnerable groups
- Coventry's school improvement strategy.

## **2 Recommendations**

2.1 The Education and Children's Services Scrutiny Board are recommended to:

- 1) Comment and raise questions on the information provided in this report.
- 2) Consider the implications for corporate leadership and strategic planning
- 3) Identify any recommendations for the appropriate Cabinet Member.

## **3 Information/Background**

3.1 In November, members received a report on the 2015 provisional headline achievement data. As this data, published by the Department for Education (DfE) in October was provisional, local authorities will see changes to their results between the provisional publication and the January performance tables publication.

3.2 The Department for Education published the validated results for the Early Years Foundation Stage Profile (EYFSP) on 21 October 2015, Key Stage 2 on 10 December 2015, and Key Stage 4 and Key Stage 5 on 21 January 2016.

3.3 Headline achievement data for the following vulnerable groups has been provided:

- Looked After Children (LAC)
- Pupil Premium (PP)
- Free School Meals (FSM)
- Special Educational Needs (SEN)
- English as an Additional Language (EAL)
- Ethnicity group – White British, Gypsy/Roma

Further information on how to access school-level data is available in **Appendix 1, Section 8**.

- 3.4 The marked improvement in Coventry primary schools was recognised in the [Ofsted Annual Report](#) 2014/15 (published 1<sup>st</sup> December 2015). Further developments this year are ensuring that the model for improvement is sustained into the future.

All secondary school head teachers are committed to making rapid improvement to secure improved outcomes, building upon the success of the school-to-school support strategy in primary. Since September 2015 secondary headteachers have adopted a refreshed approach to partnership working and developed and implemented a new secondary school improvement strategy in January 2016.

**Kirston Nelson,  
Director Education,  
Libraries and Adult Learning  
People Directorate**

## 1. 2015 validated results

Key stage	Summary of changes to 2015 provisional results (provisional results reported in November in brackets)
<b>Early Years Foundation Stage</b>	No changes
<b>Key Stage 2</b>	<p><b>L4+ Reading, Writing and Maths (RWM)</b></p> <p>The percentage of pupils achieving Level 4+ in Reading, Writing and Maths in Coventry is <b>78%</b> (76%) compared with 80% nationally.</p>
<b>Progress between key stage 1 and key stage 2</b>	<p>In <b>Reading</b>, Coventry is <b>in-line with</b> (1% below) the national average with <b>91%</b> (90%) of pupils making expected progress.</p> <p>In <b>Writing</b>, <b>95%</b> (94%) of children in Coventry reach their expected progress, <b>1% above</b> (the same as) the national average.</p>
<b>Closing the gap at key stage 2</b>	<p>For L4+ Reading, Writing and Maths the attainment gap between Coventry Pupil Premium pupils and their peers (non-Pupil Premium) has widened by <b>2% points</b> (1%) from 12 to <b>14</b> (13).</p> <p>The gap to national has stayed the same at 15.</p>
<b>Key Stage 4</b>	<p><b>5+ GCSEs at A*-C including English and maths</b></p> <p>The percentage of pupils achieving 5+ GCSEs at A*-C (including English and Maths) is <b>51%</b> (50%) compared to <b>57%</b> (56%) nationally.</p>
<b>Progress between key stage 2 and key stage 4</b>	<p><b>72%</b> (71%) of pupils made expected progress in <b>English</b>. This is above the national average of <b>71%</b> (70%).</p>
<b>Closing the gap at key stage 4</b>	<p>The percentage of Coventry Pupil Premium pupils achieving 5+ GCSEs at A*-C including English and Maths increased to <b>34.7%</b> (33.3%) but is below Pupil Premium pupils nationally at <b>36.8%</b> (36.1%).</p> <p>For 5+ GCSEs at A*-C including English and Maths the attainment gap between Coventry Pupil Premium pupils and their peers (non-Pupil Premium) has narrowed by <b>1.2% points</b> (0.6%) from 25.5 to <b>24.3</b> (24.9).</p>
<b>Key Stage 5</b>	No changes
<b>Post-16 participation</b>	<p>In 2015 the <b>September Guarantee</b> (which requires local authorities to find education and training places for 16- and 17-year-olds) for Coventry is <b>95.1%</b>, above England and West Midlands at 94.6%.</p> <p>The <b>key stage 4 destination measure*</b> for Coventry remains unchanged at 91%. This is 1% point below national at 92% (unchanged) and now also 1% point below the West Midlands figure which increased to <b>92%</b> (91%).</p> <p><small>*The percentage of the 2012/13 cohort going to, or remaining in, an education or employment destination in 2013/14</small></p>

**See Appendix 1 for further detail about the above results**

## 2. Performance of vulnerable groups

Progress and attainment by vulnerable group 2014 and 2015							
Group	Phase	Measure	Coventry National	2014	2015	Diff	Narrative
<b>Looked After Children (LAC)</b>	Early Years Foundation Stage	Good Level of Development (GLD)	Coventry				The percentage of children achieving the desired standard in phonics, Key Stage 1 average point score and L4+ Reading, Writing and Maths dropped significantly in 2015.
			National				
	Year 1 Phonics	% Standard	Coventry	63	57	-6	The percentage of children achieving phonic outcomes remains above national.
			National	53	55	2	
	Key Stage 1	Average Point Score (APS)	Coventry	13.5	12.9	-0.6	The percentage of children achieving Key Stage 1 average point score is just below national
			National	13.1	13.3	0.2	
	Key Stage 2	L4+ Reading, Writing & Maths	Coventry	61	29	-32	The percentage of children achieving Key Stage 2 L4+ Reading, Writing and Maths is well below national.
			National	48	53	5	
	Key Stage 4	5+A*-C including English & Maths	Coventry	8	16	8	The percentage of pupils achieving 5+ GCSEs at A*-C including English and Maths is the same as national.
			National	15	16	1	
		Expected Progress English	Coventry	41	45	4	The percentage of pupils making expected progress in English is above national by 7% points.
			National	39	38	-1	
Expected Progress Maths		Coventry	26	38	12	The percentage of pupils making expected progress in maths is above national by 8% points.	
		National	29	30	1		
<b>Pupil Premium (PP)</b>	Early Years Foundation Stage	Good Level of Development (GLD)	Coventry	50.1	55	4.9	The percentage of children achieving a good level of development increased.
			National				
	Year 1 Phonics	% Standard	Coventry	65	68	3	The percentage of children achieving Key Stage 2 L4+ Reading, Writing and Maths increased.
			National	63	66	3	
	Key Stage 1	Average Point Score (APS)	Coventry	14.7	14.9	0.2	The gap to national remains the same for the vast majority of primary school measures.
			National	14.6	14.8	0.2	
	Key Stage 2	L4+ Reading, Writing & Maths	Coventry	68	69	1	The percentage of children achieving Key Stage 2 L4+ Reading, Writing and Maths widened by 1% point and is below national.
			National	68	70	2	
	Key Stage 4	5+A*-C including English & Maths	Coventry	35.3	34.7	-0.6	The percentage of pupils achieving 5+ GCSE at A*-C including English and Maths has decreased by 0.6% points and is 2.1% points below national.
			National	36.7	36.8	0.1	
Expected		Coventry	63.6	62.3	-1.3	The percentage of pupils making expected progress in English is	

		Progress English	National	59.2	58.8	-0.4	above national by 3.5% points.
		Expected Progress Maths	Coventry	44.1	52	7.9	The percentage of pupils making expected progress in maths is above national by 2.1% points.
			National	48.7	49.9	1.2	
<b>Free School Meals (FSM)</b>	Early Years Foundation Stage	Good Level of Development (GLD)	Coventry	49	53	4	The percentage of children achieving a good level of development has increased by 4% points and remains above national.
			National	45	51	6	
	Year 1 Phonics	% Standard	Coventry	64	68	4	The percentage of children achieving Key Stage 2 L4+ Reading, Writing and Maths has increased by 4% points and is above national.
			National	61	65	4	
	Key Stage 1	Average Point Score (APS)	Coventry	14.7	14.9	0.2	The gaps to national remain the same in the majority of primary school measures.
			National	14.6	14.8	0.2	
	Key Stage 2	L4+ Reading, Writing & Maths	Coventry	65	66	1	The percentage of pupils achieving 5+ GCSEs at A*-C including English and Maths has decreased by 2.1% points and is below national.
			National	64	66	2	
	Key Stage 4	5+A*-C including English & Maths	Coventry	33.4	31.5	-1.9	The percentage of pupils making expected progress in English is above national by 3% points.
			National	33.7	33	-0.7	
Expected Progress English		Coventry	64	61	-3	The percentage of pupils making expected progress in maths is above national by 3% points.	
		National	58	58	0		
Expected Progress Maths	Coventry	44	52	8			
	National	48	49	1			
<b>Special Educational Needs (SEN)</b>	Early Years Foundation Stage	Good Level of Development (GLD)	Coventry				The percentage of children achieving the desired standard in Year 1 phonics increased.
			National				
	Year 1 Phonics	% Standard	Coventry	44	45	1	The percentage of children achieving Key Stage 2 L4+ Reading, Writing and Maths increased by 1% point and is above national.
			National	40	42	2	
	Key Stage 1	Average Point Score (APS)	Coventry	12.4	12.9	0.5	The gap to national remains the same for a good level of development.
			National	12.5	12.5	0	
	Key Stage 2	L4+ Reading, Writing & Maths	Coventry	39	42	3	The percentage of children achieving the desired standard in Year 1 phonics remains above national. However, the gap has decreased by 1% point.
			National	42	43	1	
	Key Stage 4	5+A*-C including English & Maths	Coventry	26.3	18.3	-8	The percentage of pupils achieving 5+ GCSEs at A*-C including English and Maths has decreased significantly (8% points) and is below national.
			National	20.4	20	-0.4	
Expected Progress English		Coventry	60.6	56.6	-4	The percentage of pupils making expected progress in English is above national by 8% points.	
		National	48.9	48.8	-0.1		
Expected	Coventry	39.6	37.4	-2.2	The percentage of pupils making expected progress in maths is in		

		Progress Maths	National	36.4	37.5	1.1	line with national.
<b>English as an Additional Language (EAL)</b>	Early Years Foundation Stage	Good Level of Development (GLD)	Coventry				The Key Stage 1 average point score increased by 0.4.
			National				
	Year 1 Phonics	% Standard	Coventry	73	73	0	The gap to national widened for Year 1 phonics by 2% points.
			National	74	76	2	
	Key Stage 1	Average Point Score (APS)	Coventry	15.2	15.6	0.4	The gap to national for Key Stage 1 average points score narrowed by.2 and is now nearly in-line with national.
			National	15.5	15.7	0.2	
	Key Stage 2	L4+ Reading, Writing & Maths	Coventry	75	71	-4	The gap to national widened significantly for Key Stage 2 L4+ Reading, Writing and Maths by 6% points.
			National	75	77	2	
	Key Stage 4	5+A*-C including English & Maths	Coventry	55.9	53.3	-2.6	The percentage of pupils achieving 5+ GCSEs at A*-C including English and Maths has decreased by 2.6% points and is below national.
			National	54.7	54.6	-0.1	
Expected Progress English		Coventry	82.4	78.7	-3.7	Although the percentage of pupils making expected progress in English decreased it is above national by 3.1% points.	
		National	77.2	75.6	-1.6		
Expected Progress Maths	Coventry	72.9	72.5	-0.4	The percentage of pupils making expected progress in maths decreased very slightly and is in line with national.		
	National	72.5	72.6	0.1			
<b>White British (WB)</b>	Early Years Foundation Stage	Good Level of Development (GLD)	Coventry				The percentage of children achieving the desired standard in Year 1 phonics increased by 3% points.
			National				
	Year 1 Phonics	% Standard	Coventry	73	76	3	The gap to national remained unchanged in all primary school measures.
			National	74	77	3	
	Key Stage 1	Average Point Score (APS)	Coventry	15.9	16	0.1	The percentage of pupils achieving 5+ GCSEs at A*-C including English and Maths has decreased by 2% points and is below national.
			National	16.1	16.2	0.1	
	Key Stage 2	L4+ Reading, Writing & Maths	Coventry	77	79	2	The percentage of pupils making expected progress in English decreased by 3% points and is just below national by 1% point.
			National	79	81	2	
	Key Stage 4	5+A*-C including English & Maths	Coventry	50	48	-2	The percentage of pupils making expected progress in maths increased by 7% points but is still below national by 4% points.
			National	56	56	0	
Expected Progress English		Coventry	71	68	-3		
		National	69	69	0		
Expected Progress Maths	Coventry	54	61	7			
	National	64	65	1			
<b>White</b>	Early Years	Good Level of	Coventry				The Key Stage 1 average point score stayed the same (no national

<b>British Boys eligible for Free School Meals (Ever 6)</b> <b>(WBB FSM E6)</b>	Foundation Stage	Development (GLD)	National				<p>comparator).</p> <p>The percentage of children achieving Key Stage 2 L4+ Reading, Writing and Maths increased by 5% points (no national comparator).</p> <p>The percentage of pupils achieving 5+ GCSEs at A*-C including English and Maths stayed the same and is below national by 6.6% points.</p> <p>The percentage of pupils making expected progress in English decreased by 3% points but is in line with national.</p> <p>The percentage of pupils making expected progress in maths increased by 7.2% points but is still below national by 2.1% points.</p>
	Year 1 Phonics	% Standard	Coventry				
			National				
	Key Stage 1	Average Point Score (APS)	Coventry	14.2	14	-0.2	
			National				
	Key Stage 2	L4+ Reading, Writing & Maths	Coventry	55	60.1	5.1	
			National				
	Key Stage 4	5+A*-C including English & Maths	Coventry	21.1	21.5	-0.4	
			National	27.4	28.1	-0.7	
		Expected Progress English	Coventry	51.1	48.1	3	
National			47.4	48	-0.6		
Expected Progress Maths		Coventry	33.5	40.7	-7.2		
		National	40.5	42.8	-2.3		
<b>Gypsy/Roma</b>	Early Years Foundation Stage	Good Level of Development (GLD)	Coventry				<p>The percentage of children achieving the expected standard in Year 1 phonics increased by 9% points, but is 7% below national.</p> <p>The Key Stage 1 average point score increased by nearly 1% point.</p> <p>The percentage of children achieving Key Stage 2 L4+ Reading, Writing and Maths increased by 1% point</p> <p>The percentage of pupils making expected progress in English decreased significantly and is below national by 8% points.</p> <p>The percentage of pupils making expected progress in maths is below national by 4% points.</p>
			National				
	Year 1 Phonics	% Standard	Coventry	16	25	9	
			National	28	32	4	
	Key Stage 1	Average Point Score (APS)	Coventry	9.2	10.1	0.9	
			National	11.1	11.3	0.2	
	Key Stage 2	L4+ Reading, Writing & Maths	Coventry	5	6	1	
			National	29	29	0	
	Key Stage 4	5+A*-C including English & Maths	Coventry	0	0	0	
			National	8	8	0	
Expected Progress English		Coventry	38	26	-12		
		National	30	34	4		
Expected Progress Maths	Coventry	0	15	15			
	National	15	19	4			

### 3. Coventry School Improvement Strategy

#### Secondary

Following the disappointing key stage 4 summer results and the current secondary Ofsted profile, secondary Headteachers in partnership with LA officers have (during the Autumn term 2015) developed a revised secondary school improvement model that is based upon the collective moral purpose focus on improvement for all (Coventry children and young people) and an agreed set of values, principles and non-negotiables.

There has been unanimous buy-in from all headteachers (including from academies, free schools and the UTC) to adopt and implement:

- school-to-school support groupings (collaboratives)
- an overarching secondary school improvement board that identifies strategic priorities, ratifies the funding allocation against city collaborative school priorities and brokers school-to-school support
- quality assurance monitoring of the impact of support.

The key changes to the revised model (implemented in January 2016) include:

1. The establishment of:
  - collaborative groupings – agreed by all heads; based on a mixed Ofsted profile; schools within Multi- Academy Trusts (MATs) in the same collaborative; led by Chairs who are system leaders (National Leaders of Education [NLEs/LLEs])
  - a secondary school improvement board (SSIB) with representation from each of the four Chairs of the collaboratives, Chaired by the Director of Education
  - a secondary executive group with representation from each collaborative (not the Chair) to ensure increased representation from all head teachers.
2. The local authority (LA) Coventry Improvement Partner having an increased focus on quality assurance monitoring the impact of support in schools
3. An Education Standards Board (ESB) that will make clear judgements about the impact of the strategy and evaluate the effectiveness of challenge delivered through the strategy.

In time, it is proposed that the collaboratives will extend to governor and other groupings.

#### Primary

Over the last three years the primary school improvement strategy has had a significant impact upon the percentage of pupils attending good and outstanding schools. As a result we are continuing to administer the current strategy throughout 2015-16. Various refinements have been introduced to ensure that the strategy is well embedded within current practice. These include:

- The increased engagement of all schools within the day-to-day organisation and structure of the primary school partnership.
- The clarification of the key purpose of all partnership groups and meetings.
- The alignment of all systems with the new Ofsted Common Inspection Framework (CIF) (September 2015).
- Increased levels of transparency within the organisation of the partnership, including network leads representation.



- Delivery of a status-neutral approach to school improvement with all schools being active participants.
- The development of a network leads/LA officers group chaired by Director of Education.

In line with changes at a national and local level, and in response to the continued pressures to develop a system-led model that delivers increased efficiencies, we are also reviewing the current strategy for implementation in 2016-17. Proposals include:

- A new data dashboard for schools and networks.
- The introduction of school position statements for every school.
- The targeted monitoring and quality assurance of school improvement across all networks.
- A refined school improvement board process that includes a clear exit strategy.

# Secondary Partnership School Improvement – structure and organisation

## Secondary Executive

- Co-designs the structure and organisation of the secondary partnership
- Represents views of headteachers contributing to decision making
- Acts as a consultative group on a range of issues



## Secondary Partnership

- Co-constructs the strategic direction of secondary educational provision across the city
- Considers the impact of the national agenda on local provision
- Shares best practice across collaboratives
- Consults and agrees on partnership policy development in all aspects of the service
- Receives information about a range of services/providers (marketplace)
- Meeting format:
  - updates – national & local
  - marketplace (coffee break)
  - collaborative working on topic/issue/theme

Curriculum

Safeguarding

SEND and Inclusion

Finance

Early help strategy

## Collaboratives 2015-16 Chairs

A

Barrs Hill  
Blue Coat  
Foxford  
Grace Academy  
President Kennedy  
(Peter Thomas)  
Westwood

B

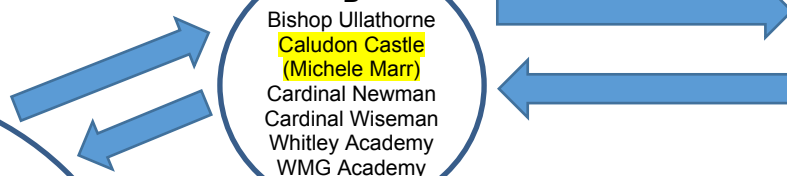
Bishop Ullathorne  
Caludon Castle  
(Michele Marr)  
Cardinal Newman  
Cardinal Wiseman  
Whitley Academy  
WMG Academy

C

Finham Park  
(Mark Baillie)  
Finham Park 2  
Lyng Hall  
Seva  
Tile Hill Wood  
Woodlands

D

Coundon Court  
Eden  
Ernesford Grange  
Sidney Stringer  
(Wendy Tomes)  
Stoke Park



## Secondary School Improvement Board

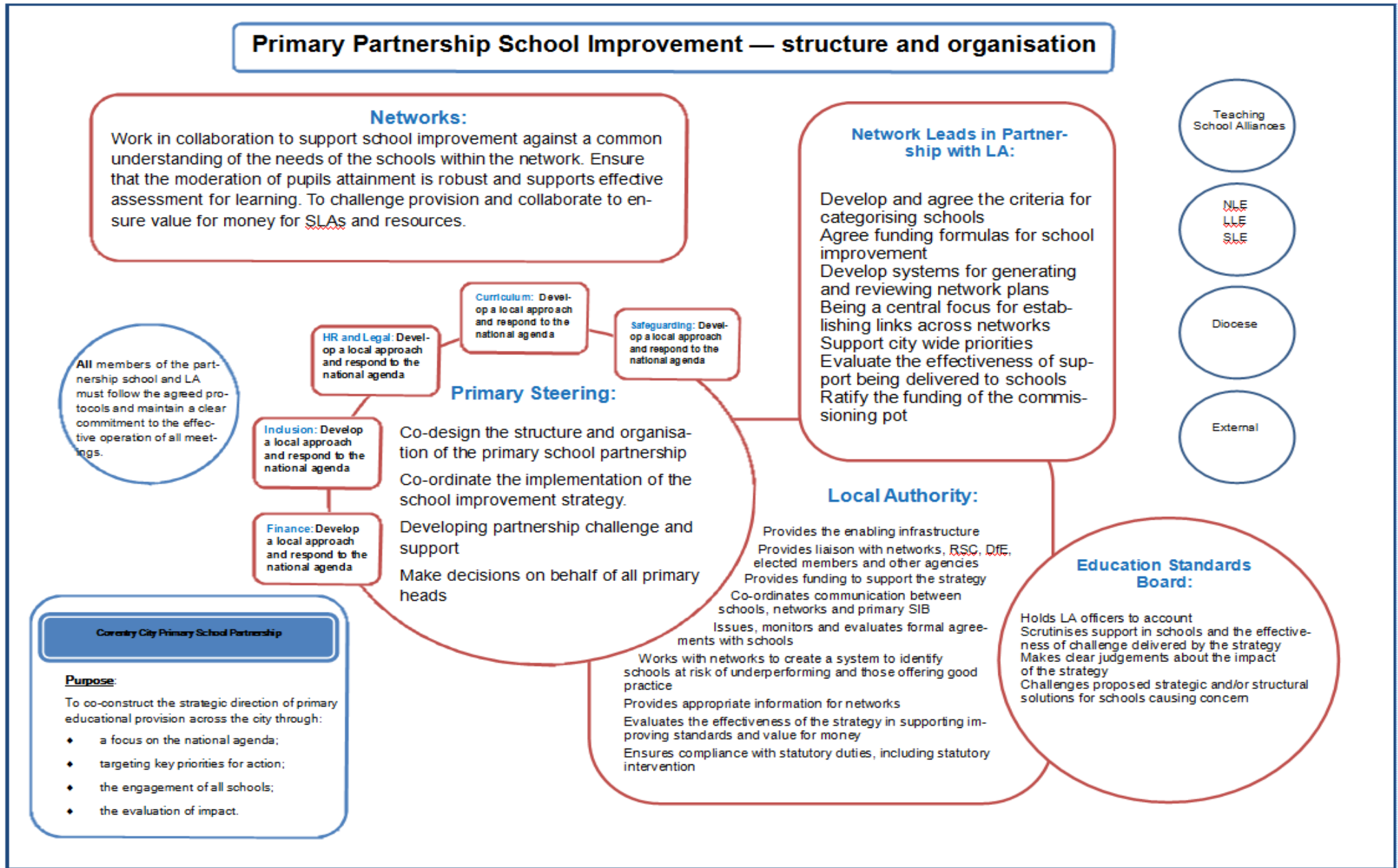
- Oversees the effectiveness of all collaboratives
- Ensures collaboratives establish and maintain an approved constitution
- Ensures appropriate schools are in receipt of support
- Ensures LA funding is used effectively
- Monitors and evaluates the impact of support in schools
- Disseminates a profile of success and good practice across the city
- Provides peer mentoring, challenge and evaluation for Chairs
- Provides support, challenge and evaluation for the LA in relation to school improvement

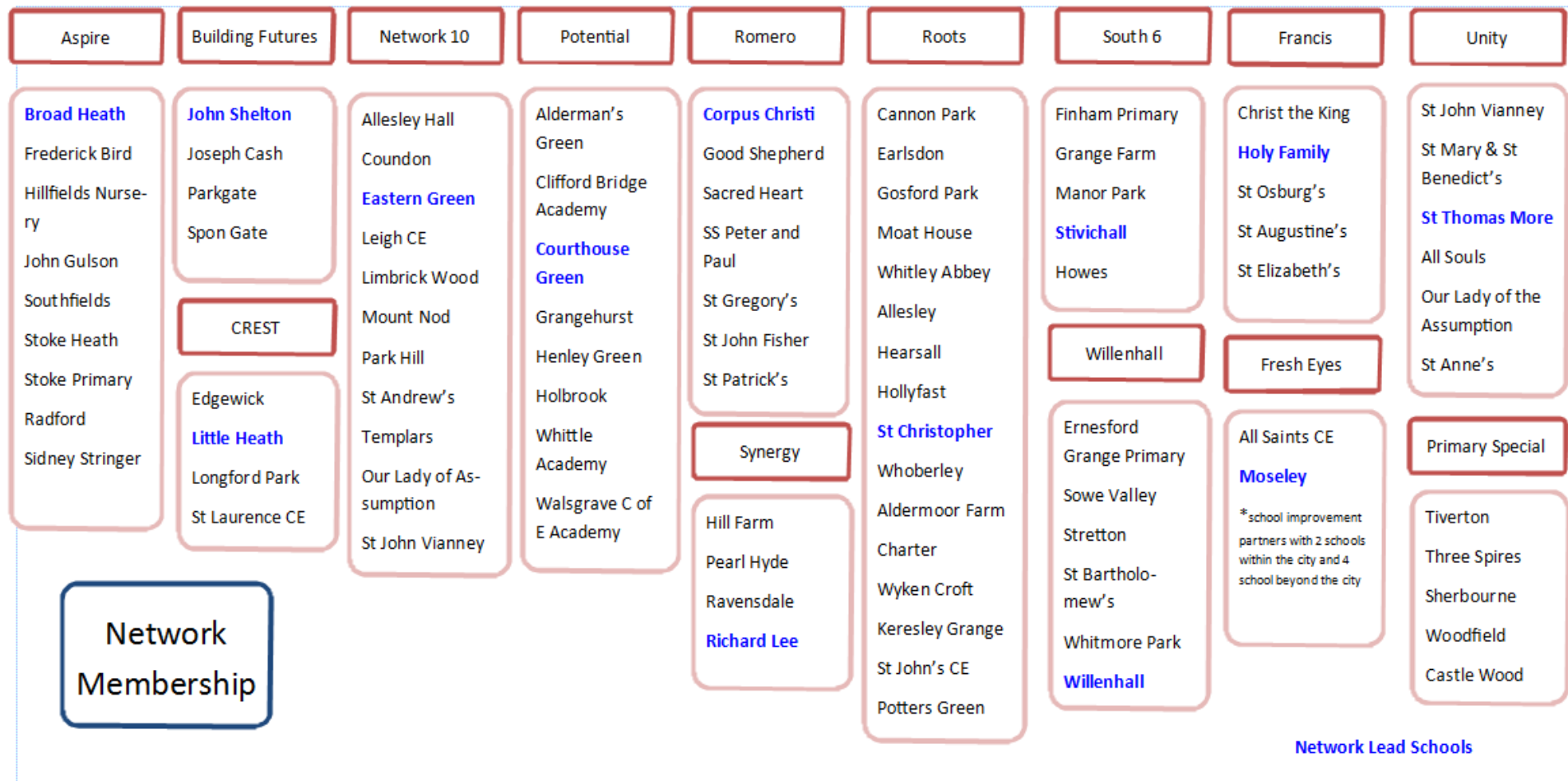
## Local Authority

- Provides the enabling infrastructure
- Provides liaison with collaboratives, RSC, DfE, elected members and other agencies
- Provides funding to support the strategy
- Co-ordinates communication between schools, collaboratives and the secondary SIB
- Issues, monitors and evaluates formal agreements with collaboratives
- Works with collaboratives to create a system to identify schools at risk of underperforming and those offering good practice
- Provides appropriate information for collaboratives
- Evaluates the effectiveness of the strategy in supporting improving standards and value for money
- Ensures compliance with statutory duties, including statutory intervention

## Education Standards Board

- Political interface with Director and LA officers
- Evaluates the effectiveness of challenge delivered by the strategy
- Makes clear judgements about the impact of the strategy
- Challenges proposed strategic and/or structural solutions for schools causing concern





Primary School Status

**Inspire Education Trust**  
 Clifford Bridge Academy  
 Whittle Academy  
 Walsgrave C of E Academy

**C of E Diocese MAT**  
 Stretton  
 St Laurence CE  
 St Bartholomew's  
 St Johns

**Romero** St John Fisher Sacred Heart  
**Catholic MAC** St Patrick's  
 SS Peter and Paul Corpus Christi  
 St Gregory's Good Shepherd

**Phoenix Federation**  
 Wyken Croft  
 Charter

**Affinity Federation**  
 Whitmore Park  
 Willenhall

**Seva Education Trust**  
 Seva Free School All through Academy

**Member of Caludon Castle MAT**  
 Hill Farm

**Member of Sidney Stringer MAT**  
 Radford  
 Sidney Stringer Free School

## Changes to headline achievement data reported in November

### 1. Early Years Foundation Stage (EYFS)

No update from November report

### 2. Key Stage 2

#### Attainment at Key Stage 2

Update – provisional figures previously reported in brackets

In 2015, the percentage of pupils achieving Level 4+ in Reading, Writing and Maths in Coventry was **78%** (76%) compared with 80% nationally

#### West Midlands and Statistical Neighbours

- The average rise in L4+ Reading, Writing and Maths seen across the West Midlands was **2%** (1%).
- Performance across 11 statistical neighbours at **78%** (77%) was **2% lower** (3%) than the national figure of 80%.

#### Progress between Key Stage 1 and Key Stage 2

Update – provisional figures previously reported in brackets

- In **Reading**, Coventry is **in-line** (1% below) with the national average with **91%** (90%) of pupils making expected progress. Coventry shares **3<sup>rd</sup> place** (4<sup>th</sup>) across statistical neighbours with Tameside.
- In **Writing**, **95%** (94%) of children in Coventry reach their expected progress, **1% above** (the same as) the national average. Coventry shares **2<sup>nd</sup> place** (4<sup>th</sup>) with Walsall and Leeds.

#### Closing the gap at Key Stage 2

Update – provisional figures previously reported in brackets

<b>Table 8: L4+ RWM attainment gap</b>	<b>2014</b>	<b>2015</b>
Coventry Pupil Premium	<b>67%</b>	<b>69%</b>
Coventry Peers (non-PP)	<b>79%</b>	<b>83%</b> (82%)
National All	79%	80%
Gap to LA Peers (non-PP)	12	<b>14</b> (13)
Gap to National	16	15

### 3. Key Stage 4 (GCSE)

Update – provisional figures previously reported in brackets

- In Coventry, the percentage of pupils achieving 5+ GCSEs at A\*-C (including English and Maths) is **51%** (50%) in 2015. The proportion achieving the same measure across England is **57%** (56%).

## West Midlands and Statistical Neighbours

- There was a decrease seen across the West Midlands of **0%** (1%).
- Coventry is placed **6<sup>th</sup>** (7<sup>th</sup>) amongst 11 statistical neighbours for the proportion of pupils achieving 5+ A\*-C (including English and Maths).

## Progress between Key Stage 2 and Key Stage 4

Update – provisional figures previously reported in brackets

- **72%** (71%) of pupils made expected progress in English in 2015. This is above the national average of **71%** (70%), above our statistical neighbour average of **69%** (68%) and places Coventry 3<sup>rd</sup> out of 11 statistical neighbours.

## Closing the gap at Key Stage 4

<b>Table 12 5A*-C EM</b>	<b>2014</b>		<b>2015</b>	
<b>Attainment gap</b>	<b>Coventry</b>	<b>National</b>	<b>Coventry</b>	<b>National</b>
Pupil Premium	<b>35.3%</b>	36.4%	<b>34.7%</b> (33.3%)	<b>36.8%</b> (36.1%)
5A*-C GCSEs including English and Maths				
Peers (non-Pupil Premium)	<b>60.8%</b>	64%	<b>59%</b> (58.2%)	<b>65.1%</b> (63.6%)
Gap	<b>25.5</b>	27.6	<b>24.3</b> (24.9)	<b>28.3</b> (27.5)

- In Coventry the outcomes of pupils receiving Pupil Premium for 5A\*-C GCSEs including English and Maths has decreased by **0.6%** (2%) points from 35.3% to **34.7%**. (33.3%).
- However, the gap has narrowed by **1.2%** points (0.6%) from 25.5 to **24.3** (24.9).

## 4. Key Stage 5 (Level 3 study)

No update from November report

## 5. Post-16 participation in education, employment and training

### September Guarantee

Update – now includes September 2015 data

<b>Table 15: September Guarantee</b>	<b>2013</b>	<b>2014</b>	<b>2015</b>
<b>Coventry</b>	<b>92.8%</b>	<b>94.8%</b>	<b>95.1%</b>
<b>England</b>	<b>92.1%</b>	<b>92.8%</b>	<b>94.6%</b>
Statistical neighbours	92.6%	93.9%	tbc
West Midlands	90.5%	92.9%	94.6%

## Participation in education, training and employment

No update from November report

## Destinations of key stage 4 (KS4) students

Update – provisional figures previously reported in brackets

<b>Table 17: KS4 Percentage of cohort going to, or remaining in, an education or employment destination</b>			
	<b>2010/11 cohort in 2011/12</b>	<b>2011/12 cohort in 2012/13</b>	<b>2012/13 cohort in 2013/14</b>
<b>Coventry</b>	<b>89%</b>	<b>91%</b>	<b>91%</b>
<b>England</b>	<b>89%</b>	<b>90%</b>	<b>92%</b>
West Midlands	89%	90%	<b>92%</b> (91%)

- The most recent key stage 4 data show Coventry **1% point below** (in line with) West Midlands and national.

## Destinations of key stage 5 students

No update from November report

## 16-18 NEET (Not in Education, Employment or Training) and Situation Not Known rates

No update from November report

## 6. Ofsted

### Primary and secondary schools

No update from November report

## 7. Conclusion

Members have been provided with the validated local authority data to give them an opportunity to comment or raise questions.

## 8. References and sources

Much of the data contained in the tables above is currently accessible to the public via the Department for Education's Government Data website:

<https://www.gov.uk/government/organisations/department-for-education/about/statistics>

### Early Years Foundation Stage Profile

<https://www.gov.uk/government/collections/statistics-early-years-foundation-stage-profile>

**Published:** 21 October 2015

### Key Stage 2

<https://www.gov.uk/government/collections/statistics-key-stage-2>

**Published:** 10 December 2015

### Key Stage 4 (GCSE)

<https://www.gov.uk/government/collections/statistics-gcses-key-stage-4>

**Published:** 21 January 2016

**Key Stage 5 (GCE A Level)**

<https://www.gov.uk/government/collections/statistics-attainment-at-19-years>

**Published:** 21 January 2016

**Ofsted 'Data View'**

<http://dataview.ofsted.gov.uk>

**Published:** Ofsted Data View is usually updated on a six monthly basis

**Local authority interactive tool (LAIT)**

<https://www.gov.uk/government/publications/local-authority-interactive-tool-lait>

A tool for comparing data about children and young people across all local authorities in England